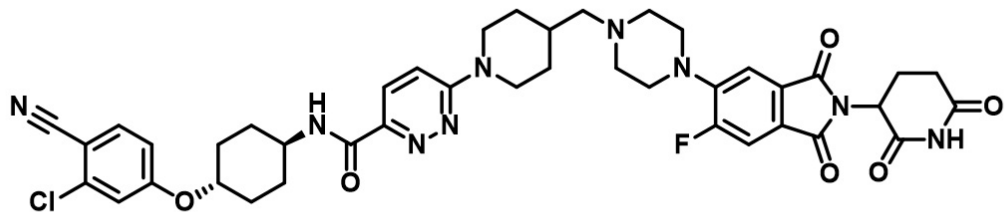


DMSO 1H 600MHz

11.11  
8.58  
8.57  
7.86  
7.84  
7.81  
7.79  
7.73  
7.71  
7.46  
7.44  
7.38  
7.34  
7.32  
7.14  
7.12  
5.12  
5.11  
5.10  
5.09  
4.55  
4.52  
4.51  
4.49  
4.47  
3.86  
3.86  
3.85  
3.85  
3.25  
3.04  
3.02  
3.00  
2.88  
2.61  
2.58  
2.56  
2.53  
2.22  
2.21  
2.11  
2.09  
2.04  
2.03  
2.03  
1.91  
1.89  
1.84  
1.82  
1.66  
1.64  
1.62  
1.61  
1.54  
1.52  
1.50  
1.15  
1.13  
1.12



$C_{41}H_{43}ClFN_9O_6$   
MW: 812.30

