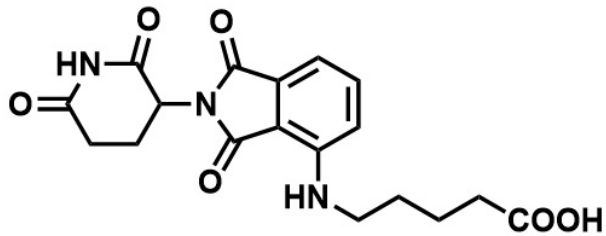


DMSO 1H 400MHz

-12.060  
-11.10

7.59  
7.57  
7.55  
7.11  
7.09  
7.02  
7.01  
6.59  
6.58  
6.56  
5.07  
5.06  
5.04  
5.02  
3.31  
3.29  
3.28  
2.93  
2.91  
2.88  
2.88  
2.87  
2.85  
2.83  
2.61  
2.60  
2.60  
2.57  
2.56  
2.54  
2.52  
2.47  
2.46  
2.28  
2.26  
2.24  
2.06  
2.05  
2.04  
2.04  
2.02  
2.02  
2.01  
2.01  
1.99  
1.98  
1.59  
1.58  
1.57  
1.56  
1.55



$C_{18}H_{19}N_3O_6$   
MW: 373.37

